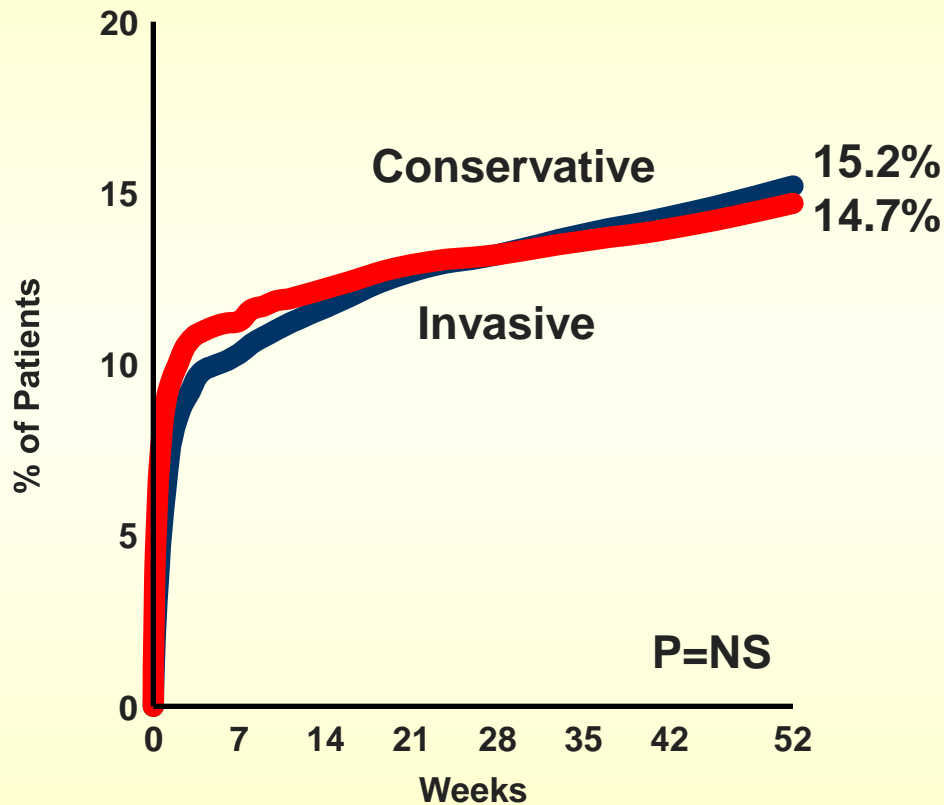


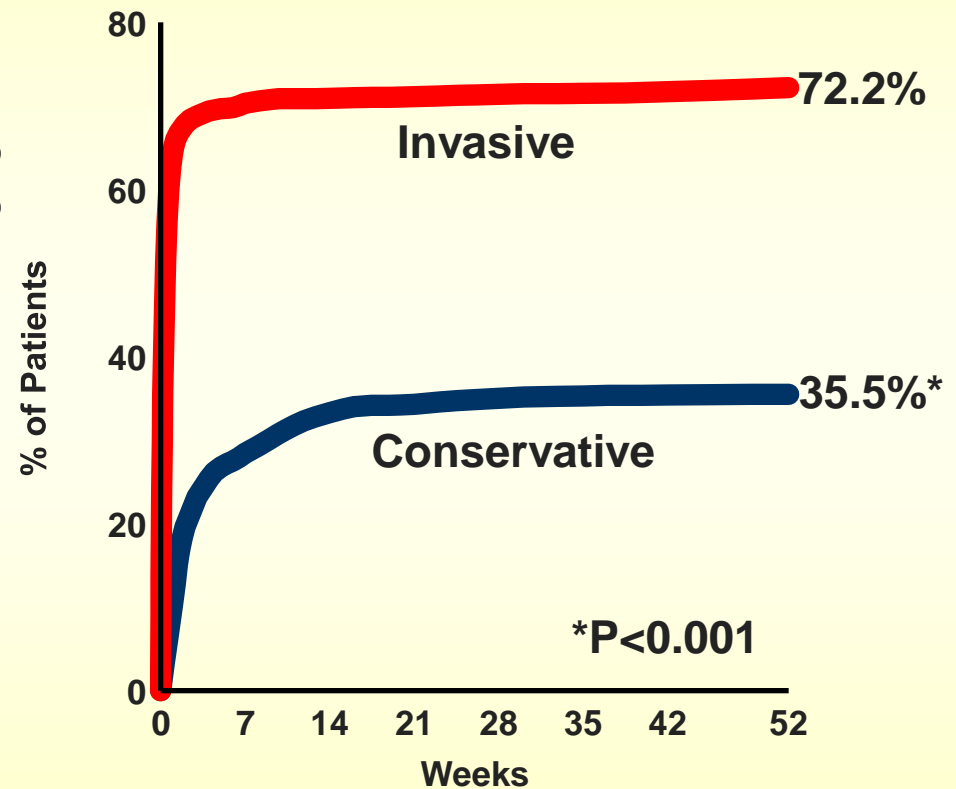


### Conservative vs. Delayed Invasive

#### Death or MI to 1 Year



#### PTCA or CABG to 1 Year

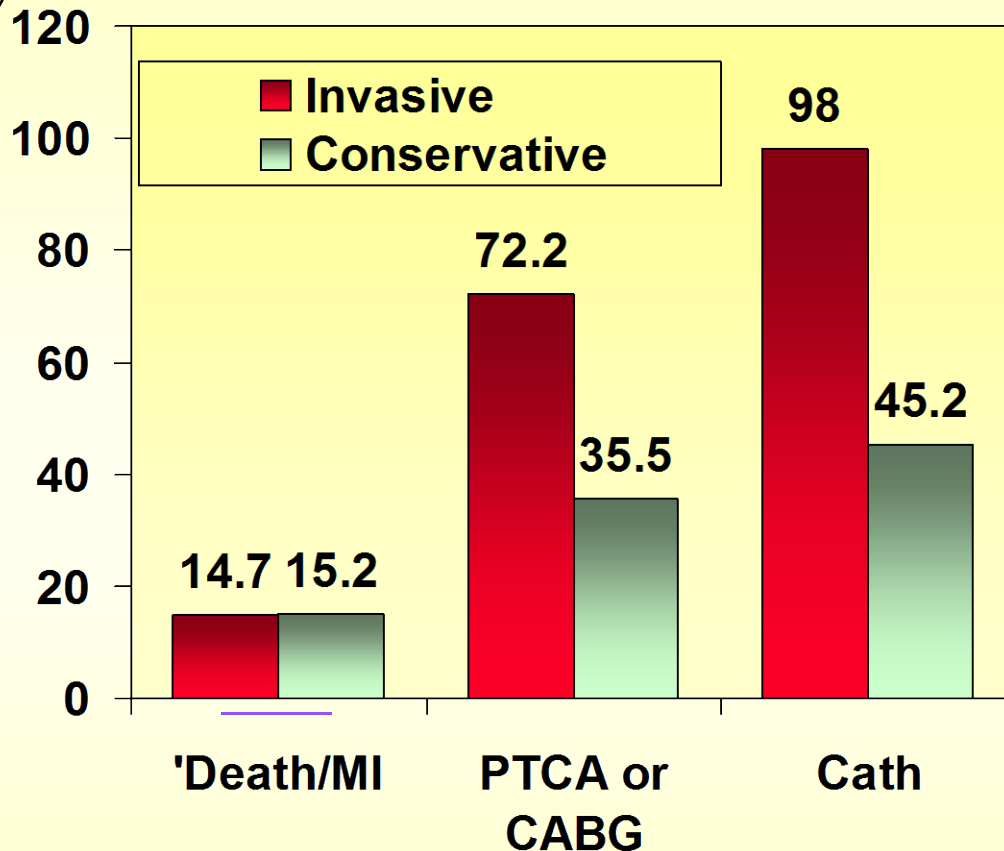


TIMI Study Group, N Engl J Med 1989; 320:618-27

Williams DO, Circulation 1992; 85:533-42



## Cost Implications of Invasive Strategy



1000 Pts



370

Caths saved

400

PTCAs saved



\$3000

per Cath

\$4000

per PTCA

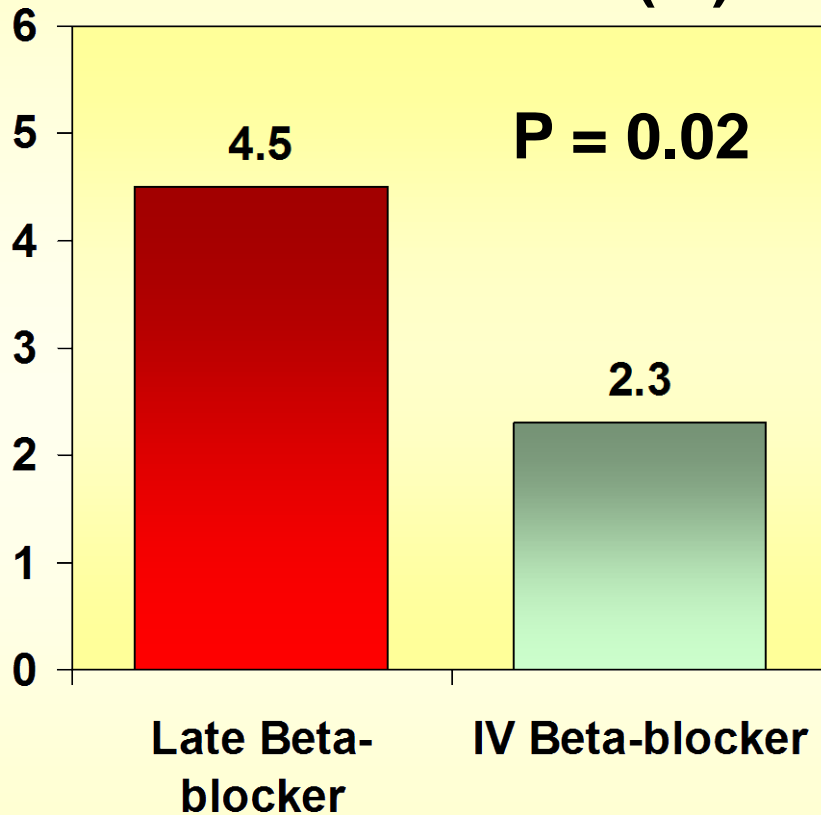
**\$3,200,000 saved**

**With no difference in outcome**



## IV Beta-Blockade Following Thrombolysis

### Reinfarction (%)



### Recurrent Ischemia (%)

